

# Grain harvesting combine

## GS2124





# Productivity and high technologies of GS2124

## UNI CAB



The new modern UNI CAB is equipped with everything necessary for comfortable operation of the combine, and a bonus is excellent visibility from the workplace.

The powerful lighting system of working area LED VISION with ten headlights, ergonomic control panel, audio system, heated refrigerator, beverage cooler, climate control, USB port for connecting external devices, 12V socket, organizers for storing documents and small items, steering column and air suspension seat with adjustments allow you to customize your favorite seat individually and comfortably.

The information system of HARVEST OFFICE on-board computer with a color touch screen makes the work of the combine operator as efficient and comfortable as possible. The HARVEST OFFICE system helps to manage and provide real-time monitoring of the state of the main combine functional units, control the working parts, engine, transmission, the progress of work and service operations, and also informs about the presence of warning and emergency situations.

For the convenience of the operator, the CAM VISION system is installed in the cab, which provides a video overview of the grain unloading areas, the bunker and the back area of the combine, which allows you to monitor these important processes without leaving the cab.



The ergonomic U-PAD combine control panel with logically grouped controls helps you to carry out work operations in an intuitive way without unnecessary difficulties. The modern multifunctional joystick MULTI GRIP, integrated into the armrest, allows you to easily control the harvesting process.

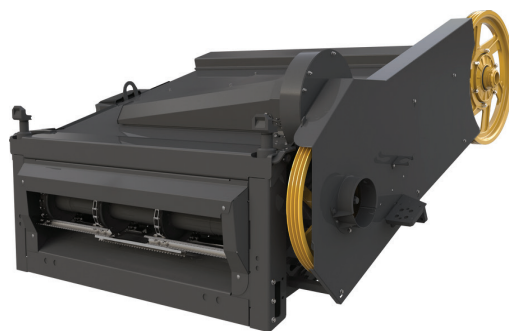
Also, to facilitate and increase the efficiency of your work, the combine has the CROP PRESET system that allows you to automatically tune the working parts of the combine (threshing drum speed, concave clearance, fan speed, upper and lower sieve gaps) when changing crops.

## Powerful start with minimal power consumption

Thanks to one of the widest feeder housing with a working angle of 35°, you get a powerful and steady start of the grain mass. The ideal trajectory of the mass feed significantly reduces the power consumption of the combine without compromising its performance.

Working at high speeds up to 10 km/h, at night, on slopes and rocky fields requires a lot of attention, but thanks to the SELF-CONTOUR electro-hydraulic relief copying system, losses behind the header are noticeably reduced and the operator can focus its attention on other important things, without worrying about possible losses.

The DUST CONTROL dust removal system improves observability and visibility of the header from the cab, allowing you to load the full length of the header with greater accuracy and unlock the full power potential of GS2124.



For even more increasing productivity in the workplace, the GS2124 combine has a hydraulic multi-coupling for adapters that reduces aggregation time, saves your efforts and promotes a quick start of harvesting.

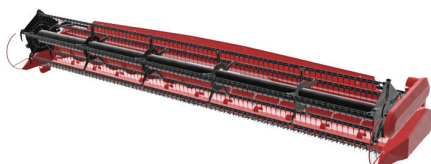
Grain harvesting combine GOMSELMASH GS2124 is the perfect combination of efficiency, comfort and customer wishes. The HYBRID-FLOW threshing and separation system provides increased productivity and threshing quality even under extremely harvesting conditions. The high level of automation of the running processes provides the stable operation of the combine on any agricultural background, excluding the possibility of a combine operator error. Choosing this combine model, you can be sure that you will get the best harvest performance with maximum comfort.



### Versatility when working on different crops



Header for harvesting grain crops  
BARST



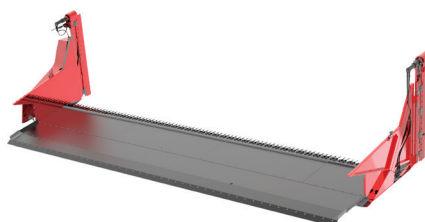
Multicrop header with flexible knife bar  
TANZER



Grain pick-up LAGARD



Sunflower headers SUNRISE / TURON



Rapessed cutterbar table



A set of equipment for harvesting corn  
for grain STORK

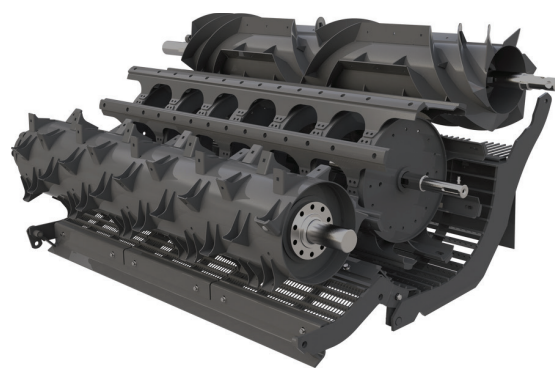




## HYBRID-FLOW – effective separation in all condition

The basis of the GS2124 combine is a double-drum threshing system and rotary separation, which has repeatedly proven its effectiveness on any agricultural background and harvested crops, which significantly increase the productivity of your combine without damaging the grain and increasing energy consumption. The perfect combination of tangential threshing and axial separation is the secret of the success of the HYBRID-FLOW system.

The proven double-drum threshing scheme with a uniform acceleration of the flow of the grain mass before it enters on the threshing drum, which ensures a quick and gentle threshing of your grain. Drum speeds can be easily adapted to different crops and harvesting conditions.



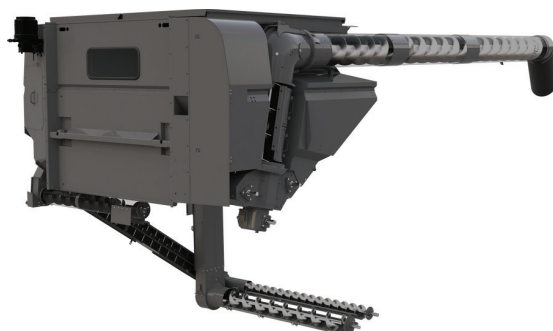
Two high-performance straw separator rotors with the diameter of 450 mm and the length of 4 200 mm, which rotate in opposite directions, thereby creating a large centrifugal force, provide efficient, fast and gentle separation of residual grain so that you can get the maximum yield.

A three-stage cleaning system with increased productivity with the area of 5.8 m<sup>2</sup> with the powerful five-section cleaning fan 5D AIR FAN with an equable spreading of air flow over the sieves will satisfy your highest requirements for the purity of the obtained grain.

## Excellent unloading

The optimal ratio of the characteristics of the GS2124 grain tank with a volume of 10 500 liters and an unloading speed of at least 100 l/s contributes to unloading in the shortest possible time, saving your precious time.

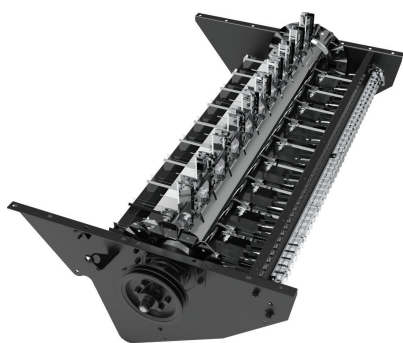
In order to save your money, the combine harvester is equipped with the PART-UNLOAD and OPTI-UNLOAD systems. The PART-UNLOAD system, if necessary, allows you to immediately stop the unloading process, which minimizes grain losses in an unforeseen situation. The OPTI-UNLOAD system makes it possible to unload grain with the powered down drive of the thresher. During the harvesting season, this function saves a large amount of your fuel and prolongs the life of the threshing and separating device of the combine.



## Optimum chopping is easy

The GS2124 combine is provided with an OPTI-CUT 92 straw chopper. 92 knives are installed on the straw chopper, which carry out high-quality and fine chopping, and then spread the non-grain part of the crop. The obtained material easily decomposes and gives nutritional properties to the soil, thereby increasing the yield of your fields in the following seasons.

To maximize crop remains utilization, GS2124 is equipped with the double disc chaff spreader called UNI-SPREADER.



## Electronic precision farming systems

The GS2124 combine is equipped with electronic precision farming systems to produce more grain at a lower cost. The use of these systems allows saving means of production, working time of equipment and personnel, improving product quality, increasing the profits of agricultural organizations due to increased yields and reduced manufacturing costs.

The combines also have the AUTOPILOT function, with which you achieve the maximum accuracy of automatic control, depending on the type of differentiated amendments.



## TECHNICAL CHARACTERISTICS

Model	GS2124
<b>Engine</b>	
Engine model	YaMZ-658
Nominal engine power, kW / h.p.	382 / 520
ARC-SYSTEM	•
Fuel tank capacity, l	800
<b>Feeder housing</b>	
Feeder housing type	chain-and-slat
Reverse	hydraulic
Hydraulic multi-coupling	•
DUST CONTROL	•
SELF-CONTOUR	•
<b>Threshing system</b>	
Threshing unit type	drum
Threshing drum width, mm	1 700
Threshing drum diameter, mm	600
Accelerating drum diameter, mm	450
Rotation speed of threshing drum (with reduction gear), rpm	582...1 152 (243...483)
Concave area, m <sup>2</sup>	1.95
Concave wrap angle, °	224
Reduction gear	•
<b>Separation and cleaning system</b>	
Separation type	rotor
Rotor, pcs	2
Length of rotor, mm	4 200
Separation area, m <sup>2</sup>	4.2
Total sieve area, m <sup>2</sup>	5.8
Cleaning fan rotation speed, rpm	504...1 560
<b>Grain tank</b>	
Grain tank volume, m <sup>3</sup>	10.5
Height of unloading auger, mm	4 400
Unloading rate, l/s	100
<b>Straw processing</b>	
OPTI-CUT straw chopper	•
Straw chopper knives, pcs	92
UNI-SPREADER	•
<b>Cabin</b>	
UNI CAB	•
ALS-SYSTEM	•
Autopilot system	•
Yield mapping system	•
CAM VISION	•
<b>Running gear</b>	
Operating speed, km/h	10
Road speed, km/h	20
Road clearance, mm	380
Half-track drive	○
<b>Overall dimensions and weight of combine without header</b>	
Length / width / height, mm	9 050 / 4 000 / 4 100
Weight, kg	18 600
<b>Headers</b>	
BARST grain header, m	9.2
TANZER multicrop header with flexible knife bar, m	9.2
STORK corn header, rows / m	8; 12 / 5.6; 8.4
TURON sunflower header, rows / m	8 / 5.6
SUNRISE rowless sunflower header, m	7.0; 8.4
Rapessed cutterbar table, m	9.2
LAGARD grain pick-up, m	4.4

• serial / ○ option

Gomselmash may change the specifications and design of the products described in this publication.  
For more information, contact your nearest dealer.



# GOMSELMASH

*Machinery of agribusiness leaders*

OJSC "Gomselmash"  
Shosseynaya str. 41  
246004 Gomel  
Republic of Belarus  
E-mail: [post@gomselmash.by](mailto:post@gomselmash.by)  
[www.gomselmash.by](http://www.gomselmash.by)



Management of sales and service center:  
Tel.: +375 232 592231; 530852

Sales departments of agricultural machinery:  
Republic of Belarus  
Tel.: +375 232 592302; 538661

Russian Federation  
Tel.: +375 232 592022; 530841

Near abroad countries  
Tel.: +375 232 591526; 591460

Far abroad countries  
Tel.: +375 232 591330; 530216

Sales department of spare parts:  
Republic of Belarus  
Tel.: +375 232 592237; 591180

Export  
Tel.: +375 232 591310; 591574

Service and maintenance department  
Tel.: +375 232 530440