

# Grain harvesting combine

## GS3219





# High harvesting speed and versatility of GS3219

## LUX CAB



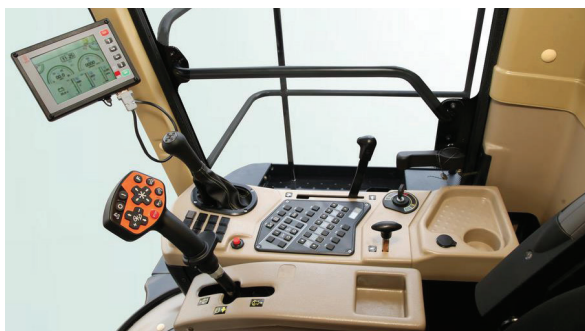
Comfort and high productivity throughout the work shift are the main ideas embodied in the new generation LUX CAB, which is equipped with the GS3219 combine harvester.

The powerful lighting system of working area LED VISION provides an excellent visibility when working at night. Also in the cabin LUX CAB, the location of the side mirrors has become more convenient.

The air suspension seat, which is individually adjusted for you thanks to the available settings, a new steering column and steering wheel – all this is done to reduce operator's stress and fatigue, increase productivity, and, therefore, achieve maximum work results.

Getting the job done just got easier. The information system of on-board computer HARVEST OFFICE with a color screen gives you the opportunity at the same time to control the combine harvester and monitor in real time the condition of its main functional units, control the working parts, engine, transmission, the progress of work and service operations, and also informs about the presence of warning and preventing emergency situations.

HARVEST OFFICE in combination with a monoblock combine control panel U-PAD and the multifunctional MULTI GRIP control joystick integrated into the armrest help to optimally adjust the work and easily manage the harvesting process under any conditions.



Also, to facilitate and increase the efficiency of your work, the combine has a system that allows you to adjust the working parts of the combine from the cab (threshing drum speed, concave clearance, fan speed) when changing crops.

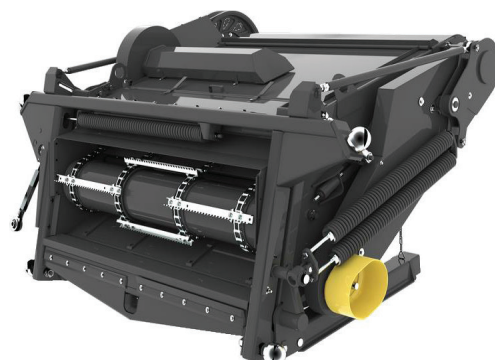
Original constructional decisions and arrangement of the combine working systems provide maximum results by reasonable power consumption, which guarantees the optimal cost of harvested grain.

## Fast and steady feeding system

The GS3219 combine harvester has the high-producing feeder housing with the use of four high-quality alloy steel chains. Thanks to this, you get a steady and smooth uninterrupted start of the grain mass and the ability to work with the minimum downtime even at high speeds.

Harvesting difficult crops will not be a problem, because the hydraulic reverse function allows you to harvest in a shorter time, saving time on cleaning the feeder housing and adapter. The simple and reliable spring tension mechanism ensures a constant tension, concentrating your attention on the more important stages of grain harvesting.

The DUST CONTROL dust removal system improves visibility of the header from the cab, allowing you to load more accurate the full length of the header and avoiding small obstacles, increasing the service life of the cutterbar and reducing downtime for its replacement.



The GS3219 combine harvester is designed for a variety of grain harvesting conditions, including showing excellent results at corn harvesting. This is achieved due to reinforced chains and slats of the feeder housing conveyor.

The hydraulic multi-coupling for adapters reduces aggregation time and makes this process less time-consuming.

If you need to harvest grain in a short time due to special agroclimatic conditions, the power of machinery and the high quality of the obtained straw are important for you, then the GS3219 combine harvester will be the best choice for you.



### Versatility when working on different crops



Header for harvesting grain crops  
and soybean BARST / TANZER



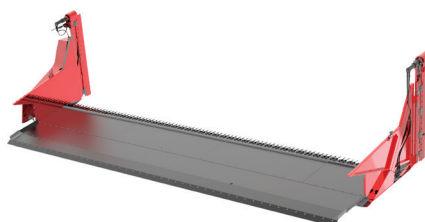
Conveyer header DIVERS,  
grain swath header STRIVER



Grain pick-ups LAGARD



Sunflower headers SUNRISE / TURON



Rapessed cutterbar table



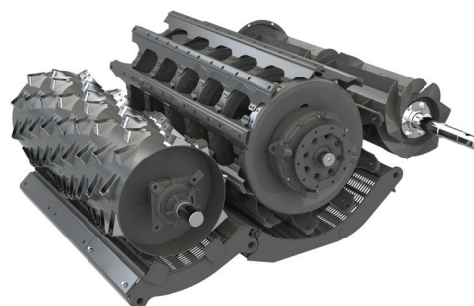
A set of equipment for harvesting corn  
for grain STORK



## Versatile threshing and efficient separation

The basis of the GS3219 combine is the HYBRID-FLOW system. The proven double-drum threshing scheme with a uniform acceleration of the flow of the grain mass before it enters the threshing drum, which ensures a quick and gentle threshing of your grain. The increased volumes of the drums in combination with the increased area of double concave made it possible to make the threshing path longer, and the threshing itself more careful.

In addition, the accelerator drum evenly distributes the mass, reducing the load on the threshing drum and the main concave. That's why you get a stable and efficient threshing, providing the combine with an advantage when harvesting wet crops.



The high productivity of the combine is achieved due to two straw separator rotors with a diameter of 450 mm and a length of 4 200 mm, which rotate in opposite directions, thereby creating a large centrifugal force, ensure efficient, fast and gentle allocation of residual grain so that you can get the maximum yield.

A cleaning sieves of an impressive area, three cleaning cascades, a powerful fan with a uniform distribution of air flow over the sieves – such a cleaning system satisfies the highest requirements for the purity of the obtained grain.

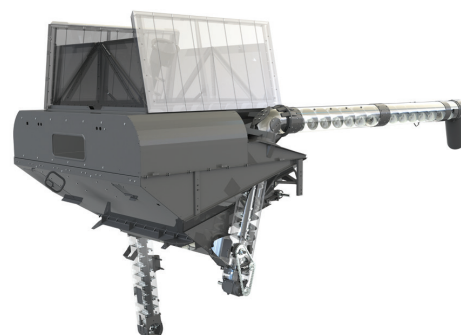
## Gentle unloading in optimal time

The 9 500 liter grain tank is optimally suited for medium and large farms with field yields 50-60 centner per hectare.

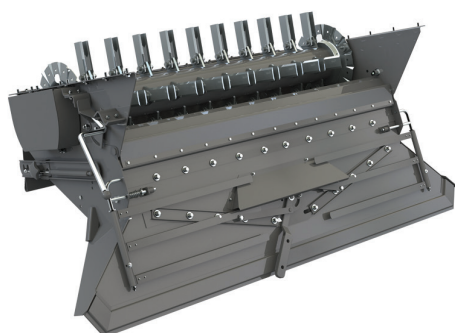
Due to the optimal ratio of the unloading speed of 90 l/s and the volume of the grain tank, the emptying of a full tank occurs in less than 2 minutes without damaging the grain.

The height and length of the unloading auger make it easy to unload grain into vehicles, even on combines with 9 meters headers.

The PART-UNLOAD system, if necessary, allows you to immediately stop the unloading process, which minimizes grain losses in an unforeseen situation.



## Efficient chopping and nothing extra



The time-proved OPTI-CUT 80 straw chopper with an optimal number of 80 blades ensures consistently high quality chopping and spreading of the non-grain part of the crop without the use of additional functions.

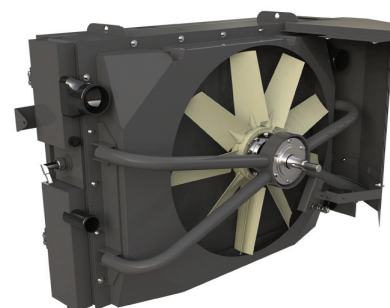
To maximize crop remains utilization, GS3219 is equipped with the double disc chaff spreader called UNI-SPREADER. Adjusting the speed of the double disc chaff spreader from 400 to 800 rpm helps to successfully spread the chaff of any cereal crop without affecting the air flow of the cleaning. And the optimal location of UNI-SPREADER above the field makes it possible to dispense with additional functions under the influence of the wind.

## Systems for fast and effective work

Thanks to the innovative ARC-SYSTEM the radiator is cleaned by reverse airflow generated by a reversible fan that blows out all the dirt from an air inlet zone, which increases the performance of your combine and simplifies its maintenance.

When you need to harvest crops that are easily damaged, such as corn and sunflower, use the reduction gear, which is included in basic configuration on the GS3219 combine. This is how a gentle threshing is achieved with a minimum percentage of damaged grain.

To ensure non-stop operation during the hottest periods of harvesting, timely control and lubrication of the internal components of the combine is necessary. To minimize downtime, the GS3219 combine is equipped with the automatic central lubrication system, which improves the reliability of 26 major components and reduces maintenance time.





## TECHNICAL CHARACTERISTICS

Model	GS3219
<b>Engine</b>	
Engine model	YaMZ-658
Nominal engine power, kW / h.p.	287 / 390
ARC-SYSTEM	•
Fuel tank capacity, l	800
<b>Feeder housing</b>	
Feeder housing type	chain-and-slat
Reverse	hydraulic
Hydraulic multi-coupling	•
DUST CONTROL	•
<b>Threshing system</b>	
Threshing unit type	drum
Threshing drum width, mm	1 500
Threshing drum diameter, mm	800
Accelerating drum diameter, mm	600
Rotation speed of threshing drum (with reduction gear), rpm	442...876 (185...368)
Concave area, m <sup>2</sup>	2.08
Concave wrap angle, °	213
Reduction gear	•
<b>Separation and cleaning system</b>	
Separation type	rotor
Rotor, pcs	2
Length of rotor, mm	4 200
Separation area, m <sup>2</sup>	4.2
Total sieve area, m <sup>2</sup>	5.0
Cleaning fan rotation speed, rpm	313...972
<b>Grain tank</b>	
Grain tank volume, m <sup>3</sup>	9.5
STICK CONTROL vibro bottom	•
Height of unloading auger, mm	4 200 / 4 600
Unloading rate, l/s	90
<b>Straw processing</b>	
OPTI-CUT straw chopper	•
Straw chopper knives, pcs	80
UNI-SPREADER	•
<b>Cabin</b>	
LUX CAB	•
ALS-SYSTEM	•
Autopilot system	○
<b>Running gear</b>	
Operating speed, km/h	10
Road speed, km/h	20
Road clearance, mm	330
<b>Overall dimensions and weight of combine without header</b>	
Length / width / height, mm	9 250 / 3 900 / 4 000
Weight, kg	17 900
<b>Headers</b>	
BARST grain header, m	7.0; 9.2
TANZER multicrop header with flexible knife bar, m	7.0; 9.2
STRIVER grain swath header, m	9.2
DIVERS conveyer header, m	9.0
STORK corn header, rows / m	8 / 5.6
TURON sunflower header, rows / m	8 / 5.6
SUNRISE rowless sunflower header, m	7.0; 8.4
Rapeded cutterbar table, m	7.0; 9.2
LAGARD grain pick-up, m	3.4; 4.4

• serial / ○ option



# GOMSELMASH

*Machinery of agribusiness leaders*

OJSC "Gomselmash"  
Shosseynaya str. 41  
246004 Gomel  
Republic of Belarus  
E-mail: [post@gomselmash.by](mailto:post@gomselmash.by)  
[www.gomselmash.by](http://www.gomselmash.by)



Management of sales and service center:  
Tel.: +375 232 592231; 530852

Sales departments of agricultural machinery:  
Republic of Belarus  
Tel.: +375 232 592302; 538661

Russian Federation  
Tel.: +375 232 592022; 530841

Near abroad countries  
Tel.: +375 232 591526; 591460

Far abroad countries  
Tel.: +375 232 591330; 530216

Sales department of spare parts:  
Republic of Belarus  
Tel.: +375 232 592237; 591180

Export  
Tel.: +375 232 591310; 591574

Service and maintenance department  
Tel.: +375 232 530440