

# Grain harvesting combine

## GS10





# Performance and comfort of GS10

## LUX CAB



The convenience of the workplace directly affects the efficiency of the operator, because he spends up to 12 hours a day at the workplace in difficult conditions. Having studied the wishes of farmers working in various fields, Gomselmash created a comfortable cabin of the new generation LUX CAB, in which special attention is paid to the ergonomics of the workplace and the interior.

The powerful lighting system of working area LED VISION provides an excellent visibility when working at night. Also in the cabin LUX CAB, the location of the side mirrors has become more convenient.

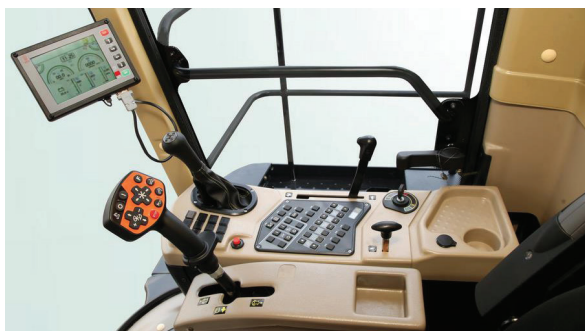
To increase operator productivity and reduce his fatigue, the LUX CAB features a highly adjustable air-suspension seat, a new steering column and steering wheel. All this allows the operator to set up a comfortable working position and achieve maximum results throughout the shift.

Simplicity, convenience of operation and optimal settings of the combine are also ensured by the U-PAD combine control panel, the modern MULTI GRIP joystick, an on-board computer with a color display and a USB connector for external devices.



The HARVEST OFFICE system gives you the opportunity to simultaneously control the combine and provide real-time monitoring of the state of its main functional units, control the working parts, engine, transmission, the progress of work and service operations, and also inform you about the presence of warning and emergency situations.

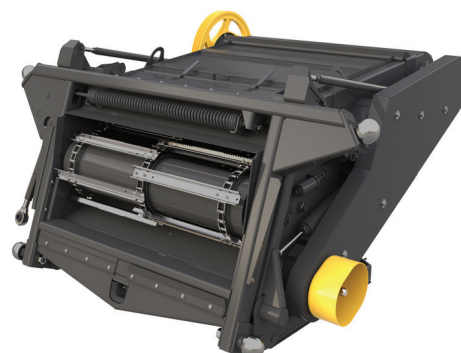
Also, to facilitate and increase the efficiency of your work, the combine has a system that allows you to adjust the working parts of the combine from the cab (threshing drum speed, concave clearance, fan speed) when changing crops.



## Universal feeding system

The GS10 combine harvester has a feeder housing using three high quality structural chains. Thanks to the feeder housing width of 1 500 mm and the simple design of the conveyor, you get a steady and smooth uninterrupted start of the grain mass and the ability to work with the minimum downtime during the most difficult period of harvesting.

Harvesting difficult crops will not be a problem, because the hydraulic reverse function allows you to harvest in a shorter time, saving time on cleaning the feeder housing and adapter. The use of a hydraulic motor in the design of the feeder housing provides a stepless reversing of the conveyor, significantly reducing the time to perform this operation.



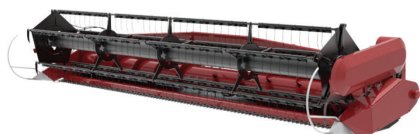
The simple and reliable spring tension mechanism provides constant tension force under various harvesting conditions, concentrating your attention on more important harvesting steps.

The hydraulic multi-coupling for adapters reduces aggregation time and makes this process less time-consuming.

**GOMSELMASH GS10 combine harvester is the golden mean of performance and comfort. The combination of single-drum threshing, three-stage separation, proven technical solutions and a reasonable price makes the GS10 combine the best choice among the “classic” combine harvesters.**



### **Versatility when working on different crops**



Headers for harvesting grain crops  
and soybean BARST / TANZER



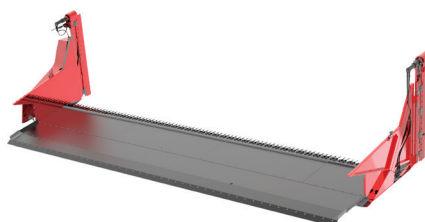
Conveyer header DIVERS,  
grain swath header STRIVER



Grain pick-ups LAGARD



Sunflower headers SUNRISE / TURON



Rapessed cutterbar table



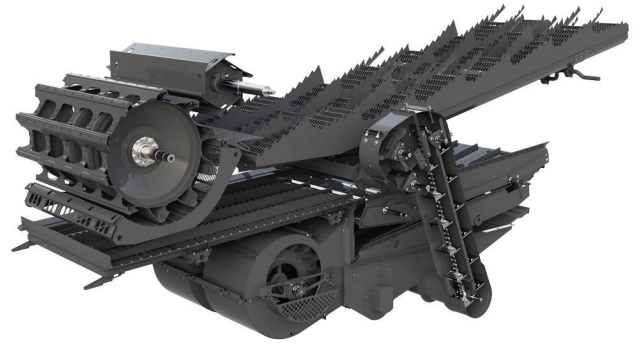
A set of equipment for harvesting corn  
for grain STORK



## Large drum – efficient and gentle threshing

The base of the GS10 combine is the classic threshing and separation system, which has repeatedly proven its efficiency on any agricultural background and harvested crops.

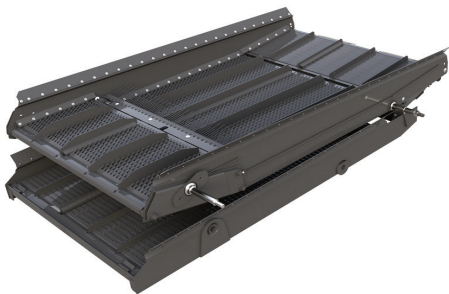
Such a scheme, apart from enviable technological reliability, provides versatility of application and simplicity of maintenance. The largest drum size in its class (diameter 800 mm) and deck allow you to significantly soften the threshing mode without reducing the degree of threshing. The concave clearance required for optimal threshing is controlled by an electric mechanism from the cab.



The DRUM-FLOW system fully demonstrates its performance when working in extremely harvesting conditions (high-straw and wet grain). Also, this threshing system eliminates the need for additional dust removal devices. This is achieved through minimum air flow created by a single threshing drum, which minimizes dust formation in the working area of the header. This technology increases reliability without additional financial costs.

After threshing, the straw passes in a uniform flow through the straw walker, which is open at the bottom, ensuring reliable separation of almost all residual grain. Thanks to the finger grating of the returns pan, the grain heap is pre-distributed into two layers, which are evenly flow to the cleaning sieves. This system makes it possible to process even large volumes of straw quickly and easily.

A cleaning sieves of an impressive area, three cleaning cascades, a powerful fan with a uniform distribution of air flow over the sieves – such a cleaning system satisfies the highest requirements for the purity of the obtained grain.



## Optimal unloading

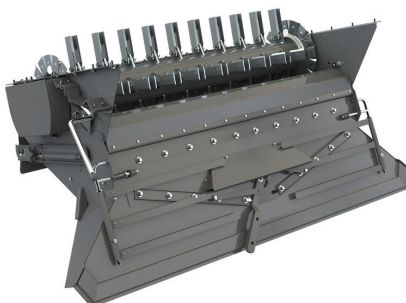
The 7 000 litres grain tank is optimally suited for medium-sized farms with field yields 25-40 centner per hectare.

A full grain tank is emptied without grain damage in less than 2.5 minutes thanks to an unloading speed of 50 l/s. With the help of the STICK CONTROL system, you can harvest high-moisture grain, thereby reducing the downtime of your machines.

The height and length of the unloading auger make it easy to unload grain into vehicles, even on combines with 9 meters headers.



## Required chopping result without complications



The time-proved OPTI-CUT 80 straw chopper with an optimal number of 80 blades ensures consistently high quality chopping and spreading of the non-grain part of the crop without the use of additional functions.

The use of a balancing disc and a floating bearing support increases the reliability of the straw chopper, reduces axial stress and thus increases the life of the bearings, saving your time and money.

The GS10 combine is equipped with the ALS automatic central lubrication system, which provides a safe way to deliver the required quantity of lubricant to bearings, bushings and other lubrication points at the right time. In this way, you get more efficient use of your working time, reducing downtime and maintenance time.

For ease of maintenance the GS10 combine has an additional pneumatic hose located at the lower rear of the combine. This option allows you to reduce the cleaning time of the key components of the combine.





## TECHNICAL CHARACTERISTICS

Model	GS10 PRO
<b>Engine</b>	
Engine model	YaMZ-236
Nominal engine power, kW / h.p.	184 / 250
ARC-SYSTEM	○
Fuel tank capacity, l	500
<b>Feeder housing</b>	
Feeder housing type	chain-and-slat
Reverse	hydraulic
Hydraulic multi-coupling	●
<b>Threshing system</b>	
Threshing unit type	drum
Threshing drum width, mm	1 500
Threshing drum diameter, mm	800
Rotation speed of threshing drum (with reduction gear), rpm	440...875 (185...368)
Concave area, m <sup>2</sup>	1.37
Concave wrap angle, °	130
Reduction gear	○
<b>Separation and cleaning system</b>	
Separation type	straw walker
Straw walker, pcs	5
Length of straw walker key, mm	4 100
Separation area, m <sup>2</sup>	6.15
Total sieve area, m <sup>2</sup>	5.0
Cleaning fan rotation speed, rpm	372...840
<b>Grain tank</b>	
Grain tank volume, m <sup>3</sup>	7.0
STICK CONTROL with vibro bottom	●
Height of unloading auger, mm	4 200
Unloading rate, l/s	50
<b>Straw processing</b>	
OPTI-CUT straw chopper	●
Straw chopper knives, pcs	80
<b>Cabin</b>	
LUX CAB	●
ALS-SYSTEM	○
<b>Running gear</b>	
Operating speed, km/h	8
Road speed, km/h	20
Road clearance, mm	300
<b>Overall dimensions and weight of combine without header</b>	
Length / width / height, mm	8 750 / 3 650 / 4 000
Weight, kg	11 900
<b>Headers</b>	
BARST grain header, m	6.0; 7.0; 9.2
TANZER multicrop header with flexible knife bar, m	6.0; 7.0; 9.2
DIVERS conveyer header, m	9.0
STRIVER grain swath header, m	9.2
STORK corn header, rows / m	6 / 4.2
TURON sunflower header, rows / m	8 / 5.6
SUNRISE rowless sunflower header, m	7.0; 8.4
Rapped cutterbar table, m	6.0; 7.0; 9.2
LAGARD grain pick-up, m	3.4; 4.4

● serial / ○ option



# GOMSELMASH

*Machinery of agribusiness leaders*

OJSC "Gomselmash"  
Shosseynaya str. 41  
246004 Gomel  
Republic of Belarus  
E-mail: [post@gomselmash.by](mailto:post@gomselmash.by)  
[www.gomselmash.by](http://www.gomselmash.by)



Management of sales and service center:  
Tel.: +375 232 592231; 530852

Sales departments of agricultural machinery:  
Republic of Belarus  
Tel.: +375 232 592302; 538661

Russian Federation  
Tel.: +375 232 592022; 530841

Near abroad countries  
Tel.: +375 232 591526; 591460

Far abroad countries  
Tel.: +375 232 591330; 530216

Sales department of spare parts:  
Republic of Belarus  
Tel.: +375 232 592237; 591180

Export  
Tel.: +375 232 591310; 591574

Service and maintenance department  
Tel.: +375 232 530440